



**TREN/07/FP6EN/S07.70442/038514 SEMS**

**SEMS**

**Sustainable Energy Management Systems**

Instrument: **Integrated Project**

Thematic Priority: **No. 6: "Sustainable development, global change and ecosystems (including energy and transport research)"**

### **D 1.04.1 Web-site with elementary content**

Due date of deliverable: **M14**

Actual submission date: **M14**

Start date of project: **1<sup>st</sup> June 2007**

Duration: **5 years**

Organisations name of lead contractor for this deliverable: **BAUM (Partner No. 3)**

Revision **01**

<b>Project co-financed by the European Commission within the Sixth Framework Programme (2002-2006)</b>		
<b>Dissemination Level</b>		
PU	Public	<b>PU</b>
PP	Restricted to other programme participants (including services)	
RE	Restricted to a group specified by the Commission (including the Commission Services)	
CO	Confidential, only for members of the consortium (including the Commission Services)	



# Sustainable Energy Management Systems

**Subproject 1**

**Workpackage 1.4**

**Innovation activities**

**Deliverable N° 1.04.1:**

**Website with elementary content**

**Public**

Version: 1

Munich, 30 September 2008

prepared by:

B.A.U.M. Consult GmbH

Sabine Conrad, Dr. Michael Stöhr

Gotzinger Str. 48/50, 81371 München

Tel.: +49-89-18935-0

Fax.: +49-89-18935-199

Email: [m.stoehr@baumgroup.de](mailto:m.stoehr@baumgroup.de)

Partner website : [www.baumgroup.de](http://www.baumgroup.de)

Project website : [www.sems-project.eu](http://www.sems-project.eu)





---

*The research and demonstration done in the project "Sustainable Energy Management Systems (SEMS)" and the establishment and maintenance of this publication receive funding from the European Community's Sixth Framework Programme (FP6/2002-2006) under grant agreement n° TREN/07/FP6EN/S07.70442/038514.*

*The sole responsibility for the content of this publication lies with the authors. It does not necessarily reflect the opinion of the European Communities. The European Commission is not responsible for any use that may be made of the information contained therein.*

---

## Table of content

1	Overview .....	3
2	Public part .....	4
3	Internal part.....	5

## 1 Overview

This deliverable presents the results of Task 1.04.3, Establishment of a project web-site. The objective of this task was to establish an internet platform for external communication. This included the following steps:

- Design and programming of a project web-site including a content management system allowing all project partners to contribute to putting results on the web-site.
- Provision of content on web-site and regular up-date throughout the project: documents, practical tools, etc.

Further, an internal part of the web-site was provided which allows notably keeping all relevant internal documents for the consortium partners available for down-load. This is a prerequisite for Task 7.1.2, Virtual Project Management. In addition, the internal part contains a content-management-system (CMS) which allows for all partners to put content on the internal and external part of the web-site, thus up-dating it regularly.

The work described here covers only the establishment of the web-site and the provision of elementary content. The continuous up-date of the web-site is part of the day-to-day work of all project partners and as such part of many different workpackages.

B.A.U.M. is supporting the project partners in providing input for the web-site. In order to make this support more efficient, a new task is proposed to be defined in the framework of the 2<sup>nd</sup> amendment: **Task 6.1.6**, Internal training of SEMS project partners. This task comprises the training of SEMS project partners not only on financial management (already part of the workprogramme, but not yet a separate task), but also on the use of the SEMS web-site (new part of the workprogramme).

The following chapters shortly present the public and the internal part of the web-site. For more information on the public part, see the web-site itself:

[www.sems-project.eu](http://www.sems-project.eu)

The internal part will be described in the deliverable D6.01.6, Content-Management-System (CMS) handbook for project partners.

## 2 Public part

The public part of the web-site addresses the general public and provides basic information on the SEMS project, the project consortium, news and project results. At this stage, the project web-site was mainly used for disseminating the information on the SEMS summer schools.



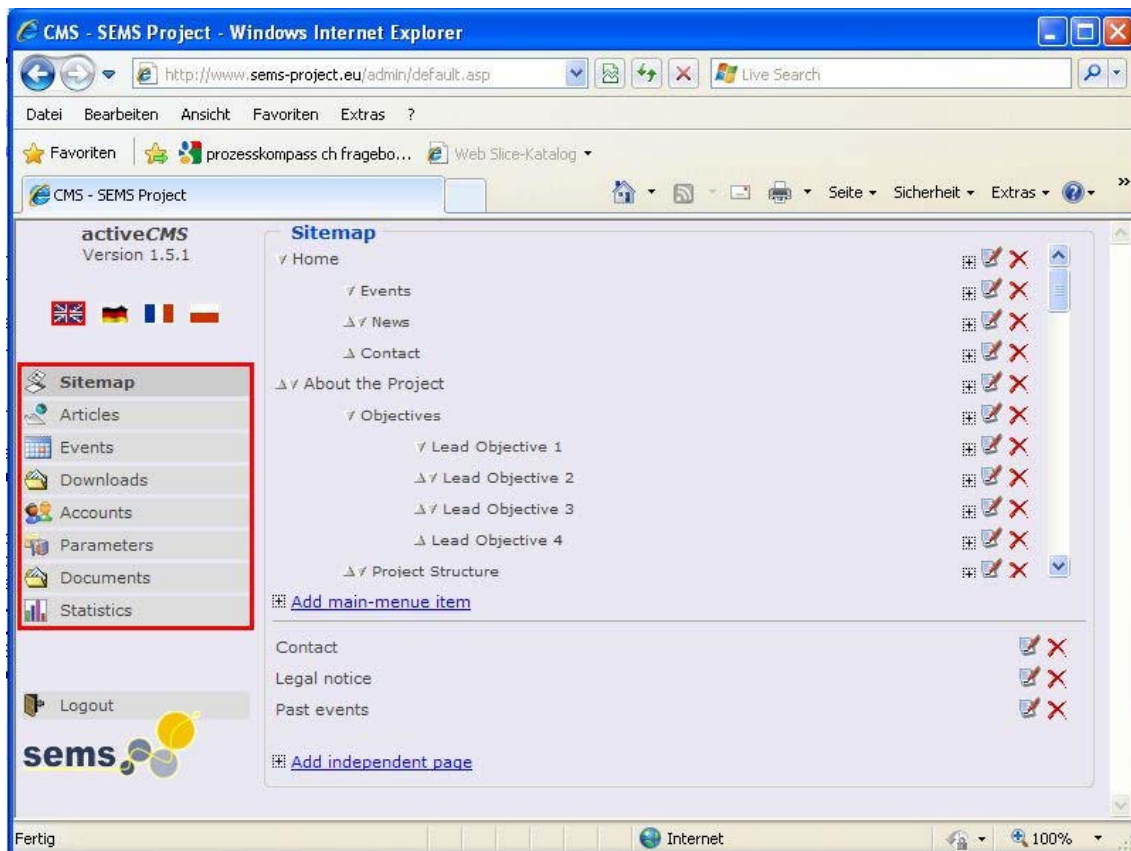
Picture 1: The welcome page of the public part of the SEMS web-site

### 3 Internal part

The internal part of the web-site has basically two functions:

1. Content-Management-System (CMS) allowing to put content on the internal and public part of the web-site. (buttons “Sitemap”, “Articles”, “Events”, “Downloads”, “Accounts”, “Parameters” and “Statistics” in screen-shot below).
2. Document up-load function for internal documents (button “documents” in screen-shot below)

Depending on the access right level attributed to a user, different functions are available. All project partners can put articles and events on the web-site. Partners with CMS rights can also configure the sitemap, can put files for down-load on the public part of the web-site, and can view the statistics. Partners with administration rights can further create and modify user accounts and parameters.



**Picture 2:** The main page of the internal part of the SEMS web-site as a user with administrator rights can see it.